

Brighten the colorful fluorescence, let the protein release the light of life

A Complete Set of IF Application Tools

Based on Abbkine proteomics research workstation, we offer IF product portfolio to scientists worldwide, including universal IF toolkit, IFKine™ secondary antibody with brighter and longer-lasting fluorescence, Dylight fluorescent dye with high Fluorescence Intensity& high optical resistance, SuperKine™ Enhanced Antifade Mounting Medium with good compatibility & strong antifade function, reliable & versatile primary antibody and high quality serum, which provide one-stop solution for IF experiments.



Based on the pain points of traditional IF experiments as tedious&time-consuming operation, a wide variety of reagents and poor stability&reliability of experimental results, Abbkine has developed an universal immunofluorescence (IF) toolkit for protein immunodetection, which is characterized by convenient operation, stable signal, high signal-to-noise ratio and bright color.

Product name: Universal IF Toolkit (Anti-Rabbit Dylight 488)
Cat No. KTD107-EN | Size: 100 T

■ Universal IF Toolkit

■ IFKine™/ Dylight antibodies
/primary antibodies

■ Normal serum
/Antifade Mounting Medium

■ ECL/ Antibody Dilution

Universal IF Toolkit

Immunofluorescence technology (IF) is based on the principle of the specific binding of antigen and antibody. Firstly, the known antigen or antibody is labeled with fluorescein to make fluorescent antibody, and then the fluorescent antibody (or antigen) is used as a probe to detect the corresponding antigen (or antibody) in tissues or cells. Abbkine Universal immunofluorescence (IF) toolkit is designed specifically for IF experiments which can make the experiment procedure be more easier for you.



Features & Advantages

- ★ **Convenient operation:** Complete components, no additional preparation, providing one-stop solution;
- ★ **Stable signal:** SuperKine™ Enhanced Antifade Mounting Medium provides strong anti-quenching effect and maintains excellent fluorescence intensity;
- ★ **High signal-to-noise ratio:** Provide optimized antibody diluent, effectively improve the specificity of immune response, while reducing the background signal of IF experiment;
- ★ **Bright fluorescence:** Combine excellent DyLight secondary antibodies with high quality goat serum which can let researchers observe the shining fluorescence.

Experimental Results

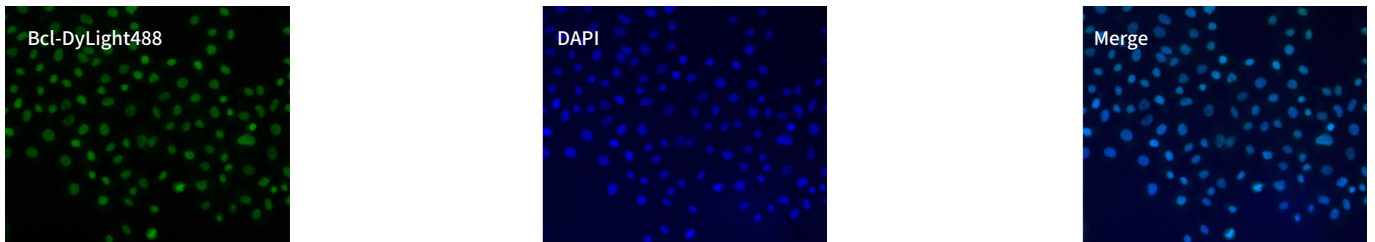


Fig.1 Immunofluorescence with HeLa cells, primary antibody is ABM0010-Bcl2 Monoclonal Antibody (1:200), secondary antibody is DyLight488 from toolkit KTD108-EN, and Goat Anti-Mouse IgG (1:200). The fluorescence boundary is clear, the signal-noise ratio is high, and the fluorescence of the merge image is bright.

Order Information

Product name	DyLight 488, Goat Anti-Rabbit IgG	DyLight 488, Goat Anti-Mouse IgG	DyLight 594, Goat Anti-Rabbit IgG	DyLight 594, Goat Anti-Rabbit IgG
Cat. No	KTD107-EN	KTD108-EN	KTD109-EN	KTD110-EN
Component	Immunostaining Permeabilization Buffer			
	EDTA Antigen Retrieval Solution pH 8.0 (20×)			
	PBS (20×)			
	Goat Serum Blocking Buffer			
	Antibody Wash Buffer (20×)			
	Antibody Dilution Buffer			
	DAPI (500×)			
	SuperKine™ Enhanced Antifade Mounting Medium			

Not Only Provide a Complete Set of IF Toolkit Products



Abbkine also develops other immunofluorescence (IF) related protein research tools for you, including IFKine™ fluorescent secondary antibody (optimized for IF assay), DyLight fluorescent secondary antibody, multi-scenario validated&reliable primary antibody, blocking serum and other immunofluorescence detection products.

IFKine™ fluorescent Secondary Antibody

The latest generation of IFKine™ fluorescent dye ensures the best fluorescent performance with increased brightness and light stability. Donkey derived IFKine™ fluorescent secondary antibodies, preabsorbed with serum from other species, have lower nonspecific binding and cleaner background, making them to be the ideal choice for fluorescence staining, especially for mIHC experiments.

Product name	Cat. No	Application	Size	Ex/Em (nm)
IFKine™ Green Donkey Anti-Mouse IgG	A24211	FCM, IF, ICC	100 µL/500 µL	493/518
IFKine™ Green Donkey Anti-Rabbit IgG	A24221	FCM, IF, ICC	100 µL/500 µL	493/518
IFKine™ Green Donkey Anti-Goat IgG	A24231	FCM, IF, ICC	100 µL/500 µL	493/518
IFKine™ Orange Donkey Anti-Mouse IgG	A24311	FCM, IF, ICC	100 µL/500 µL	555/570
IFKine™ Red Donkey Anti-Mouse IgG	A24411	FCM, IF, ICC	100 µL/500 µL	591/615
IFKine™ Red Donkey Anti-Rabbit IgG	A24421	FCM, IF, ICC	100 µL/500 µL	591/615

DyLight Fluorescent Secondary Antibody

DyLight fluorescent dye is a kind of new fluorescent dye with stronger fluorescence intensity and higher optical tolerance. Abbkine offers a complete set of DyLight series of fluorescent secondary antibodies with higher specificity and diverse applications to meet researcher's needs for most types of immunoassays.

Product name	Cat. No	Application	Size	Ex/Em (nm)
DyLight 405, Goat Anti-Mouse IgG	A23110	IF, FCM, ICC	100 µL/500 µL	400/420
DyLight 405, Goat Anti-Rabbit IgG	A23120	IF, FCM, ICC	100 µL/500 µL	400/420
DyLight 488, Goat Anti-Mouse IgG	A23210	IF, FCM, ICC	100 µL/500 µL	493/518
DyLight 488, Goat Anti-Rabbit IgG	A23220	IF, FCM, ICC	100 µL/500 µL	493/518
DyLight 549, Goat Anti-Mouse IgG	A23310	IF, FCM, ICC	100 µL/500 µL	550/568
DyLight 549, Goat Anti-Rabbit IgG	A23320	IF, FCM, ICC	100 µL/500 µL	550/568
DyLight 649, Goat Anti-Mouse IgG	A23610	IF, FCM, ICC	100 µL/500 µL	646/674
DyLight 649, Goat Anti-Rabbit IgG	A23620	IF, FCM, ICC	100 µL/500 µL	646/674
DyLight 800, Goat Anti-Mouse IgG	A23910	IF, FCM, ICC	100 µL/500 µL	777/794
DyLight 800, Goat Anti-Rabbit IgG	A23920	IF, FCM, ICC	100 µL/500 µL	777/794

Primary Antibodies

Abbkine provides hot-selling primary antibodies covering popular and key research areas.

Product name	Cat. No	Application	Reactivity	Size
Bcl-2 Monoclonal Antibody	ABM0010	WB, IHC-P, IF	Chicken, Human, Mouse, Rat	100 µL
p53 Polyclonal Antibody	ABP0110	WB, IHC-P, IF, ELISA	Human, Monkey, Mouse, Rat	100 µL
NFκB-p65 (phospho Ser536) Polyclonal Antibody	ABP0043	WB, IHC-P, IF, IP, ELISA	Human, Monkey, Mouse, Rat	100 µL
α-SMA Monoclonal Antibody	ABM0052	WB, IHC-P, IF	Human, Mouse, Rat	100 µL

Blocking Serum and Antifade Mounting Medium

Abbkine provides high quality blocking serums from a variety of species and Antifade Mounting Medium.

Product name	Cat. No	Application	Size
Normal Donkey Serum	BMS0140	IHC, ICC, IF, ELISA, BL	10 mL/10 mL×10
Normal Goat Serum	BMS0050	IHC, ICC, IF, ELISA, BL	10 mL/10 mL×10
Normal Rat Serum	BMS0070	IHC, ICC, IF, ELISA, BL	10 mL/10 mL×10
Normal Mouse Serum	BMS0100	IHC, ICC, IF, ELISA, BL	10 mL/10 mL×10
SuperKine™ Enhanced Antifade Mounting Medium	BMU104-EN	IF	10 mL/50 mL
SuperKine™ Enhanced Antifade Mounting Medium with DAPI	BMU107-EN	IF	10 mL/50 mL

Also offer flow products related with immunological experiment

Product name	Cat. No	Size	Price/\$
SuperKine™ West Pico PLUS Chemiluminescent Substrate	BMU101-EN	100 mL /500 mL	59/179
SuperKine™ West Femto Maximum Sensitivity Substrate	BMU102-EN	100 mL /500 mL	69/209
SuperKine™ Enhanced Antibody Dilution Buffer	BMU103-EN	100 mL /500 mL	59/179

★ Application for Free Trials!

Product name	Cat. No	Size
SuperKine™ West Pico PLUS Chemiluminescent Substrate	BMU101-EN-s	6 mL
SuperKine™ West Femto Maximum Sensitivity Substrate	BMU102-EN-s	6 mL
SuperKine™ Enhanced Antibody Dilution Buffer	BMU103-EN-s	20 mL



Abbkine Scientific Ltd

As the world's unique cell and protein product portfolio supplier, we provide basic tools and solutions in the fields of protein extraction and purification, immunoassays, cell culture separation, and metabolic analysis. Abbkine is committed to customer's success and excellence.

For more information, please visit Abbkine Scientific: <https://www.abbkine.com>

Tel: 400-6800-830 | Fax: +86-27-59716788 | Email: service@abbkine.com

The product listed herein is for research use only and is not intended for use in human or clinical diagnosis.

