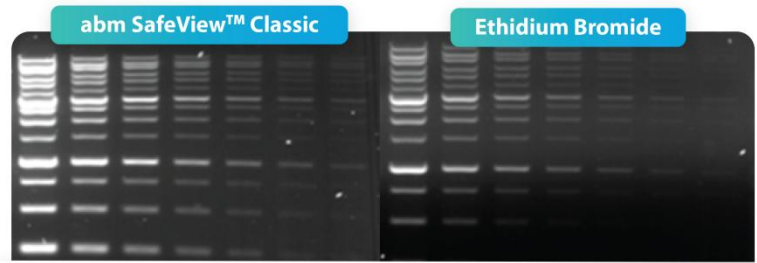


# SafeView™ Classic Nucleic Acid Gel Stain



## Gel Electrophoresis: Safety and Workflow Challenges

Traditional gel electrophoresis stains like ethidium bromide (EtBr) pose serious safety and workflow challenges. As a strong mutagen, EtBr demands strict handling and special disposal, disrupting laboratory efficiency. Its UV-dependent imaging can damage nucleic acids and limit flexibility, making EtBr a costly, outdated choice for laboratories seeking safer and more streamlined gel visualization.



- ✓ **Safer by Design**  
Replaces EtBr with Non-carcinogenic SafeView™ Dyes
- ✓ **Double Protection**  
Eliminates UV Exposure
- ✓ **Enhanced Sensitivity**  
Lowers Limit of Detection to 0.06 ng

## Technical Limitations of Other Gel Stains:

- **Low sensitivity and fluorescence:** uneven staining and high background fluorescence can result in band detection difficulty.
- **Limited stability:** 4°C or -20°C storage requirements and short term degradation can result in decreased fluorescence brightness.
- **Incompatibility with downstream applications:** UV imaging combined with stain-specific intercalation and binding patterns can interfere with subsequent applications such as DNA ligation.



## High Performance SafeView™ Classic Gel Stain

**abm's SafeView™ Classic** is a next-generation fluorescent nucleic acid gel stain for the safe, sensitive detection of double-stranded DNA, single-stranded DNA, and RNA in agarose gels. Supplied as a convenient 10,000X concentrate, it delivers high sensitivity with no background fluorescence or band-migration artifacts and remains stable at room temperature for up to 2 years. Fully compatible with downstream applications such as gel extraction and DNA ligation, SafeView™ Classic provides a reliable, high-performance alternative to expensive competitor equivalents and traditional stains like EtBr.

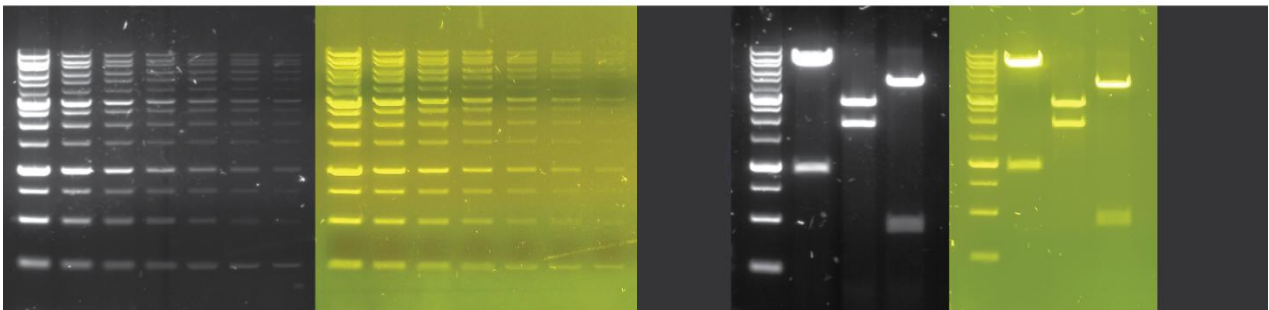


Figure 1. Two-fold serial dilution of **abm's** 1kb Plus Opti-DNA Marker (Cat. No G248) using a 1% agarose SafeView™ Classic Gel in TAE Buffer under LED illumination (left) and blue light (right).

Figure 2. Comparison of various digested plasmid DNA samples using a 1% agarose SafeView™ Classic Gel in TAE Buffer under LED illumination (left) and blue light (right).

	Product	Cat.No.	UV	Blue Light	Sensivity (per band)	Size
Gel Imager	SafeViewER™ Imager	E1001		✓	N/A	1 Unit
Gel Casting & Post Staining Type	SafeView™ Classic	G108	✓	✓	1.0 – 2.0 ng	1.0 ml

Request a [free sample!](#)

[www.abmgood.com](http://www.abmgood.com)