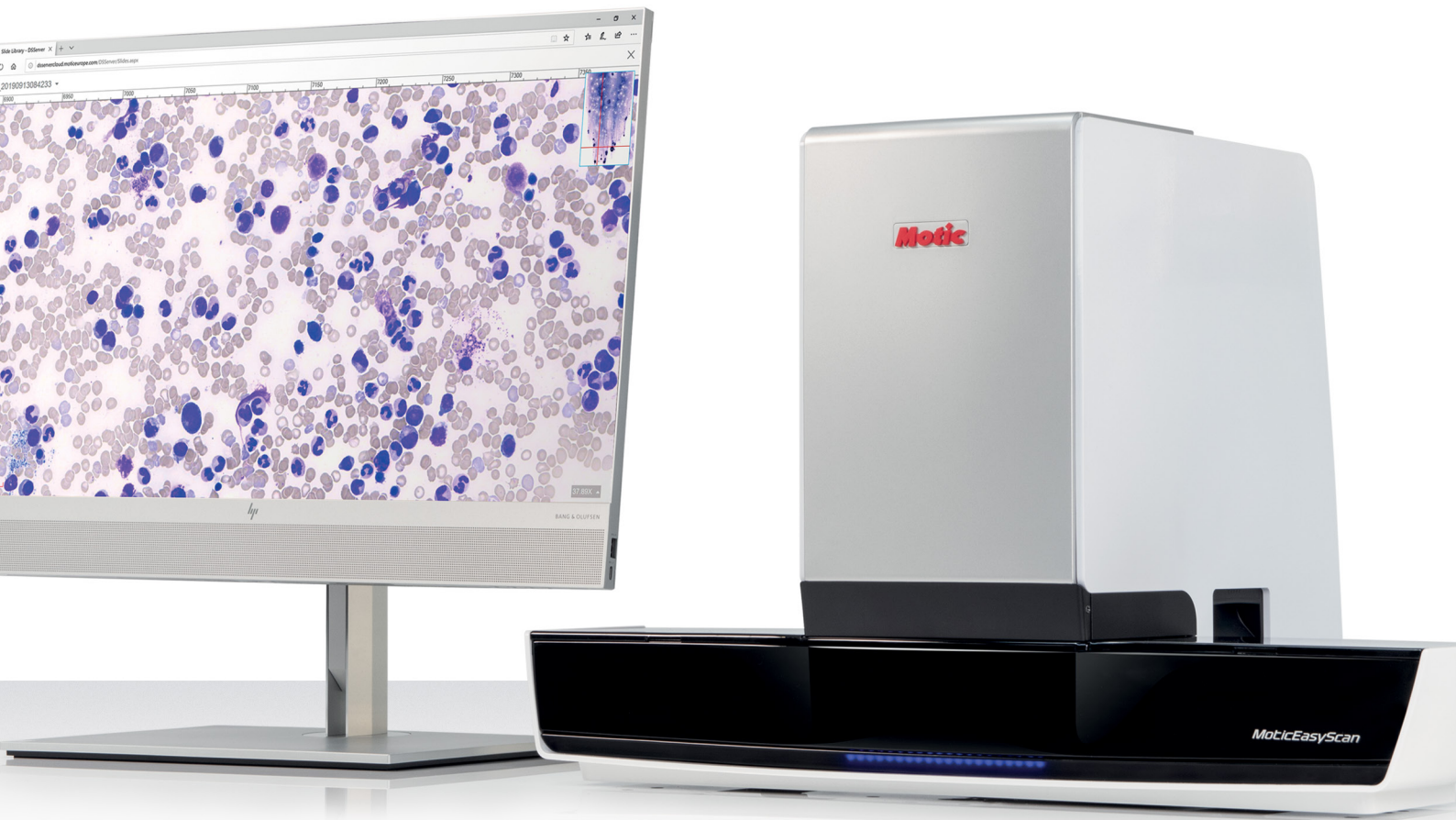


# Motic®

DIGITAL PATHOLOGY



## MoticEasyScan Pro

The MoticEasyScan Pro series - fast, reliable and powerful benchtop scanners for the new age of digital pathology



MoticEasyScan

# MoticEasyScan Pro

## Empower your pathology lab with the fast and versatile MoticEasyScan Pro series of digital scanners

Embrace the new age of digital pathology with the MoticEasyScan Pro series of slide scanners - the supreme desktop scanning solution for all small- to medium-volume labs and medical organisations. With their intuitive design and 6-slide capacity, these multipurpose digital scanners are the ideal tools for the consistently accurate and reliable digitisation of slides.

### CONVERT YOUR GLASS SLIDES INTO DIGITAL DATA

The entry-level model, the MoticEasyScan Pro 6, comes equipped as standard with three high-resolution objectives and a long-life LED light source, as well as intuitive EasyScanner software and a powerful all-in-one PC with a 27-inch QHD-resolution touchscreen monitor. For an even more cutting-edge scanner, select the MoticEasyScan Pro 24. Due to its faster scan speed and wider field of view, this powerhouse scanner takes your laboratory to new heights of efficiency and quality. Ideal for fast-paced working environments that require even quicker scanning, the MoticEasyScan Pro 24 delivers exceptional image quality with its high-resolution power. It's the perfect fit for any lab or medical organisation.

Both models permit a 'one-click' procedure or personalised scanning mode, and the built-in barcode support facilitates the straightforward tracking of slides. Remote sharing and group discussions are enabled by the optional DSAConference software, a highly useful tool for medical, research and teaching settings. All-in-all, with their reliability and power, the MoticEasyScan Pro 6 and MoticEasyScan Pro 24 are your ticket to the world of digital pathology.



Six-slide tray design boosts efficiency



Provided with a powerful all-in-one PC with a 27" QHD-resolution touchscreen



Barcoding of slides enables their easy tracking during and after digitisation



Perfect for diagnostic and research purposes in small- to medium-volume labs



Scanning time of as little as 40 seconds per slide with the MoticEasyScan Pro 24\*



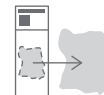
Four versatile scanning modes allow for all your scanning needs, including uneven samples



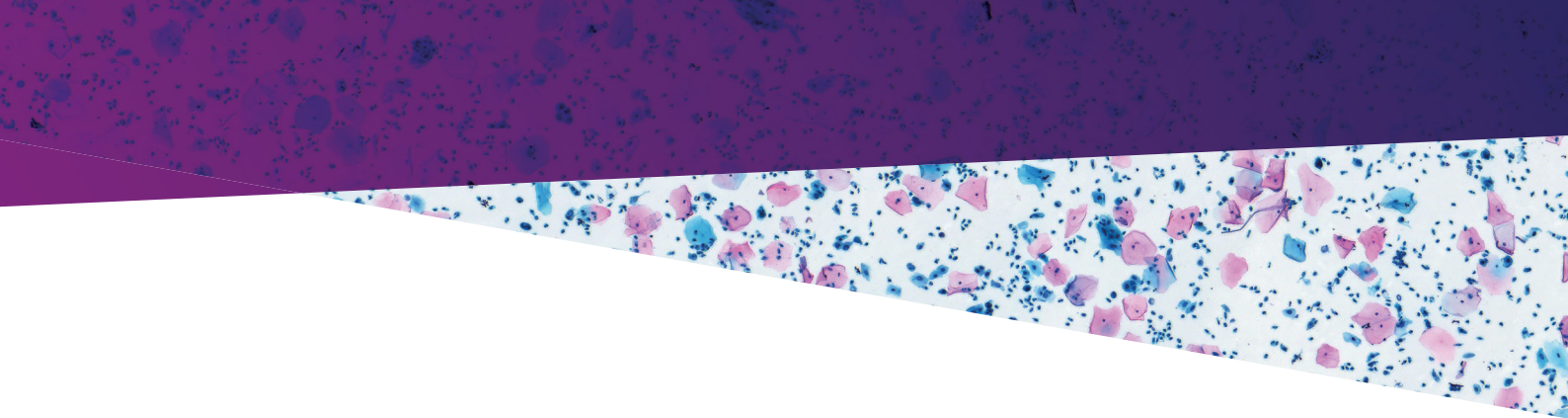
Exhibits greatly increased efficiency compared with traditional microscopy methods



Supports MDS, SVS, JPEG, TIFF and DICOM format files



Suitable for both whole-slide imaging and area of interest scanning



IMPROVE YOUR WORKFLOW

## The Benefits of Digital Pathology

Digital pathology, involving the digitisation and management of pathology images obtained from slides, offers numerous benefits, particularly with the MoticEasyScan range of digital scanners. By capturing high-quality images of pathology slides and digitising them, scanners accelerate the entire process, maximising efficiency and minimising hands-on time. Due to their efficiency and reproducibility, digital scanners can slash diagnostic delays and improve accuracy. Images can be easily and securely shared with other healthcare professionals,

regardless of location, allowing for more efficient collaboration and reducing the need for face-to-face referrals and consultations. Finally, digital pathology is more cost-effective due to the enhanced efficiency, reduced need for physical storage space and decreased risk of specimen loss/damage. It's no surprise that workplaces the world over, from small labs to massive research organisations and hospitals, are adopting digital pathology to streamline workflows and improve results.

# Technical Specifications



NAME	MOTICEASYSCAN PRO 6	MOTICEASYSCAN PRO 6 FS-LIVE	MOTICEASYSCAN PRO 24	MOTICEASYSCAN PRO 24 FS-LIVE
SENSOR SIZE	1.1" 2.3"		1.1"	
CAPTURE RESOLUTION	12MP 5MP (Optional)		12MP	
RESOLUTION	20X: 0.52µm/pixel, 40X: 0.26µm/pixel, 80X: 0.13µm/pixel	20X: 0.52µm/pixel, 40X: 0.26µm/pixel	20X: 0.52µm/pixel, 40X: 0.26µm/pixel, 80X: 0.13µm/pixel	20X: 0.52µm/pixel, 40X: 0.26µm/pixel
ESTIMATED SCANNING TIME (15X15MM AREA)*	20X with 10X objective: 40s, 40X with 20X objective: 75s			
SCAN MODE	Standard (Real-time autofocus), High precision (High-precision autofocus), EDF (Extended depth of field), Z-stack (Three-dimensional stacking)			
SCANNING FORMATS	MDS, SVS, JPEG, DICOM, TIFF			
OBJECTIVES (CCIS®, DIN)	Plan S-Apochromatic 10X/0.3, Plan Apochromatic 20X/0.75, Plan S-Apochromatic 40X/0.75	Plan Achromatic UC 4X/0.1, Plan S-Apochromatic 10X/0.3, Plan Apochromatic 20X/0.75	Plan S-Apochromatic 10X/0.3, Plan Apochromatic 20X/0.75, Plan S-Apochromatic 40X/0.75	Plan Achromatic UC 4X/0.1, Plan S-Apochromatic 10X/0.3, Plan Apochromatic 20X/0.75
6-SLIDE TRAY	●	●	●	●
SOFTWARE	DSAssistant, EasyScanner	DSAssistant, EasyScanner FS-Live	DSAssistant, EasyScanner	DSAssistant, EasyScanner FS-Live
BARCODE SUPPORT	1D: Interleaved 2 of 5, Code 39, Code 128 - 2D: Data Matrix, QR Code			
COMPUTER INCLUDED	All-in-one PC, Intel(R) Core(TM) i7-10700/16GB RAM, 256GB SSD + 1 TB storage			
RECOMMENDED SPECIFICATIONS FOR SCANNER PC	Intel Core i7-10700, 32GB Memory, 256GB SSD + 1TB SATA Disk, Window 10 Professional 64-bit			

\*Average scanning time based on 15x15 area in standard scanning mode.

## Motic America

### Motic Instruments (Canada)

130 - 4611 Viking Way, Richmond,  
BC V6V 2K9 Canada  
Tel: 1-877-977 4717 | Fax: 1-604-303 9043

### Motic Instruments (USA)

1500 Northlake Pass, Suite 197, Universal City,  
Tx 78148, USA  
Tel: 1-210-590 9010

### Motic Digital Pathology (USA)

600 California St, San Francisco, CA 94108, USA  
Tel: 1-877-977 4717

## Motic Europe

### Motic Deutschland (Germany)

Charlotte-Bamberg-Str. 6, 35578 Wetzlar, Germany  
Tel: 49-6441-210 010

### Motic Europe (Spain)

C. Les Corts 12, Pol. Ind. Les Corts.  
08349 Cabrera de Mar, Barcelona, Spain  
Tel: 34 93 756 62 86

## Motic Asia

### Motic Headquarters (Hong Kong)

Unit 2002, L20, Tower Two, Enterprise Square Five,  
38 Wang Chiu Road, Kowloon Bay, Kowloon  
Tel: 852-2837 0888 | Fax: 852-2882 2792

### Motic Xiamen (China)

4A-6, N°810 Fangshan Nan Road, XiangAn,  
Xiamen, P.R. China.  
Tel: 0592 559 9681 | Fax: 0592 559 9683

Design Change: The manufacturer reserves the right to make changes in instrument design in accordance with scientific and mechanical progress, without notice and without obligation.  
\*CCIS® is a trademark of Motic Incorporation Ltd. Motic Incorporation Limited Copyright © 2002-2023. All Rights Reserved | ISO 9001:2000, ISO 14001:2004 and ISO 13485 Certified.

Created and designed in Barcelona (Spain) by Motic Europe | May 2023

